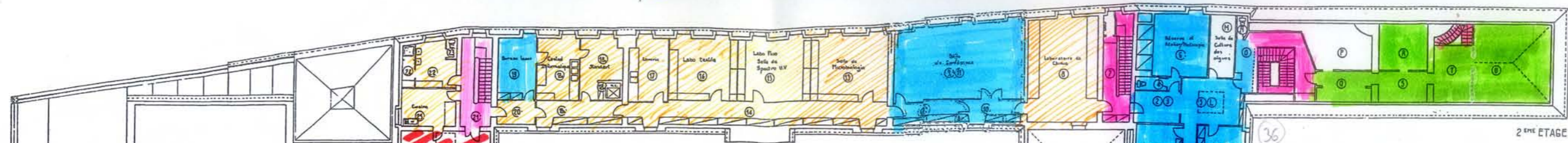


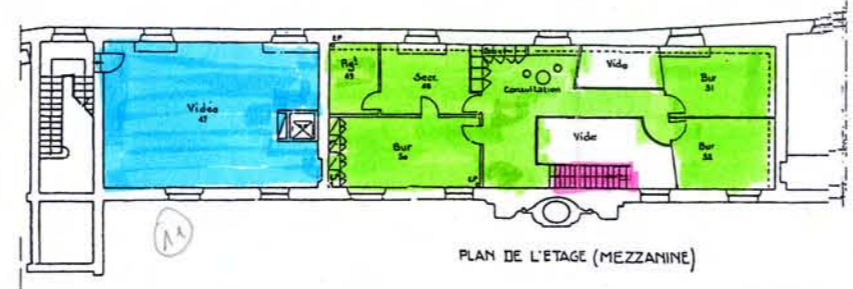
# L.R.M.H. Revêtements de sol. nettoyage des locaux



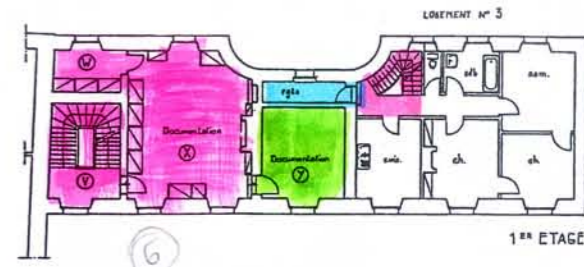
PLAN DU 1<sup>er</sup> ETAGE



1<sup>er</sup> ETAGE



PLAN DE L'ETAGE (MEZZANINE)

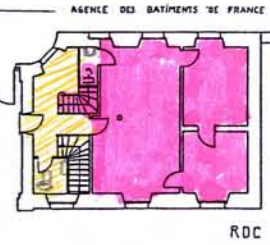


LOIREMENT n° 3

BATIMENT LAFRANCE



PLAN DU REZ DE CHAUSSEE



LOIREMENT n° 2

RDC

- thermoplastique.
- carrelage.
- tomettes terre cuite
- résine.
- peinture de sol
- moquette
- parquet